

**SINGLE PURGE, DUAL GUN MANIFOLD ASSEMBLY
NO REGULATOR, STANDARD DUMP: 667M60**

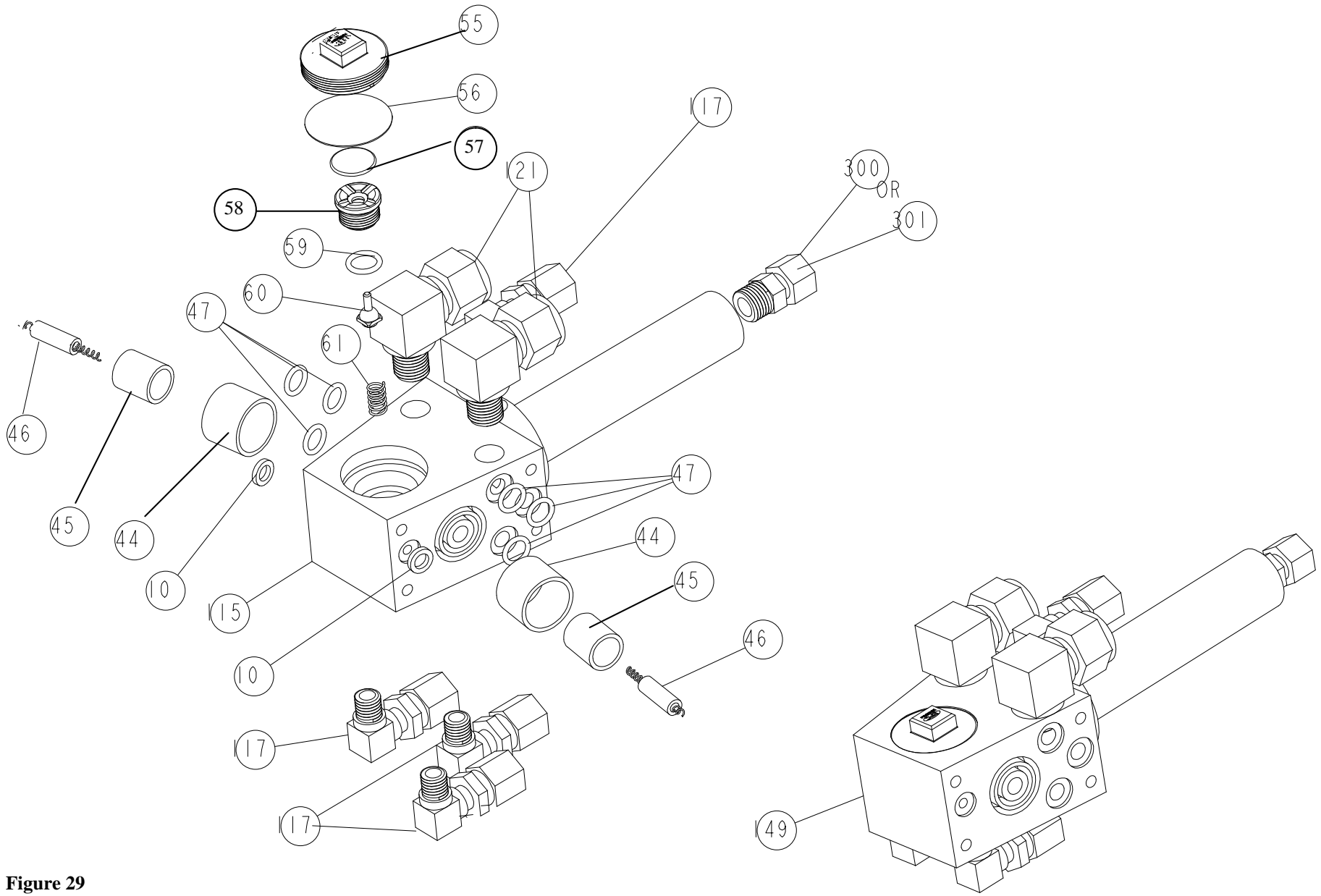


Figure 29

DESCRIPTION	ITEM #	FIG	EFC PART #	SAMES® PART #
WASHER, FLAT, TEKREZ® (CHEMICALLY RESISTANT)	10	29	252L60	82-0883-00
OUTER SLEEVE	44	29	600A40	449707
INNER SLEEVE	45	29	601A40	449706
RESISTOR ASS'Y	46	29	612A40	740532
O-RING, VITON®	47	29	8919VR	J2FTCF018
O-RING, TEKREZ® (CHEMICALLY RESISTANT)	47.1	29	8919CR	82-0410-03
VALVE COVER NUT, SQUARE	55	29	201M50M	72-0559-01
VALVE COVER NUT, 2 HOLE	55.1	29	201M50	449548
VALVE DIAPHRAGM	56	29	202M50	449549
VALVE DIAPHRAGM HOLDER	57	29	203M50	449546
SEAT, STAINLESS STEEL	58	29	211M50	742761
SEAT, COMPOSITE	58.1	29	30-1A22	N/A
O-RING, TEFLON®	59	29	1020TR	J3TTCN007
NEEDLE VALVE, STAINLESS STEEL	60	29	210M50	740511
NEEDLE VALVE, COMPOSITE	60.1	29	210M50A	N/A
VALVE SPRING	61	29	213M50	742760
MANIFOLD BODY, SP, NO REG, STD DUMP, DUAL GUN, RECIP	115	29	667M60A	742984
FITTING, NYLON ELBOW	117	29	1814NYE	85-0153-56
FITTING, NYLON ELBOW	121	29	1438NYE	85-0153-63
MANIFOLD ASS'Y, SP, NO REG, STD DUMP, DUAL GUN, RECIP	149	29	667M60	750281
FITTING, NYLON, MOD FOR 90KV CABLE	300	29	1412NYF-S	N/A
FITTING, NYLON, MOD FOR 60-1A13 CABLE (1/4" DIA) 100KV	301	29	1414NYF-M	N/A