

P-EXTENSION ASSEMBLY

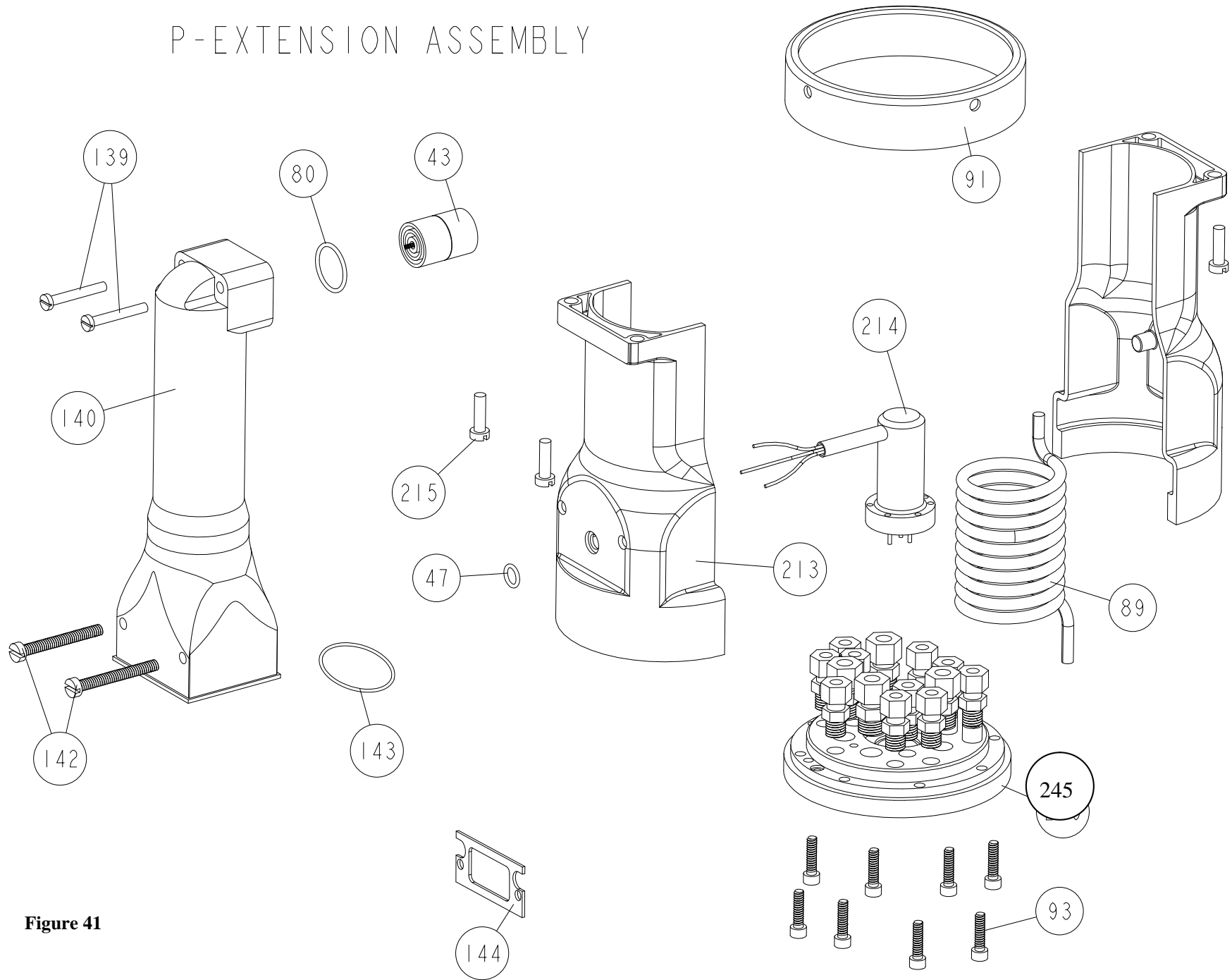


Figure 41

DESCRIPTION	ITEM #	FIG	EFC PART #	SAMES® PART #
MAIN ISOLATOR	43	41	316P50	448768
O-RING, VITON®	47	41	8919VR	J2FTCF018
O-RING, TEKREZ® (CHEMICALLY RESISTANT)	47.1	41	8919CR	82-0410-03
O-RING, VITON®	80	41	2252VR	J3ETOR046
O-RING, TEKREZ® (CHEMICALLY RESISTANT)	80.1	41	2252CR	82-0410-13
TEFLON® COIL ASS'Y	89	41	303P50	436528
STAINLESS STEEL NUT	91	41	306P50	744633
SCREW, NYLON	139	41	535NSC	740450
SCREW, NYLON GLASS FILLED	139.1	41	535NGF	N/A
CASCADE, HIGH VOLTAGE, 3 PIN	140	41	250C50	72-0542-00
SCREW, NYLON	142	41	665NSC	740451
SCREW, NYLON GLASS FILLED	142.1	41	665NGF	N/A
O-RING, VITON®	143	41	3917VR	N/A
O-RING, TEKREZ® (CHEMICALLY RESISTANT)	143.1	41	3917CR	N/A
COVER GASKET, FLAT, RUBBER (OPTIONAL)	144	41	404U30	842959
P-EXTENSION BODY, LONG, 2 PIECE	213	41	414P30	731836
MALE L.V. PLUG ASS'Y	214	41	415P30	730831
SCREW, NYLON	215	41	620NSC	N/A
SCREW, NYLON GLASS FILLED	215.1	41	620NGF	X9SVCB226
BASE PLATE, SP, TURBINE SIDE	216	41	413P30	414970
SCREW, SS SOCKET HEAD CAP	245	41	516SSC	X3AVSY183